

MakingMoviesFromFrames

Table of Contents

Contents	1
1 Summary	2
2 How to use it	4
3 Changing the default movie settings (OPTIONAL)	4
3.1 Creating a .vcf file	5
3.1.1 Specifying the Codec	5
3.1.2 Specifying the Frame Rate	6
3.1.3 Video filters	7
3.2 Exporting your .vcf file	7
3.3 Using your .vcf file	9
4 External References	title

1 Summary

MovieMake is a small .BAT file created to facilitate the making of movies from a series of image frames. This .BAT file relies on VirtualDub [1] to create the movie.

Currently frames can be in the following formats:

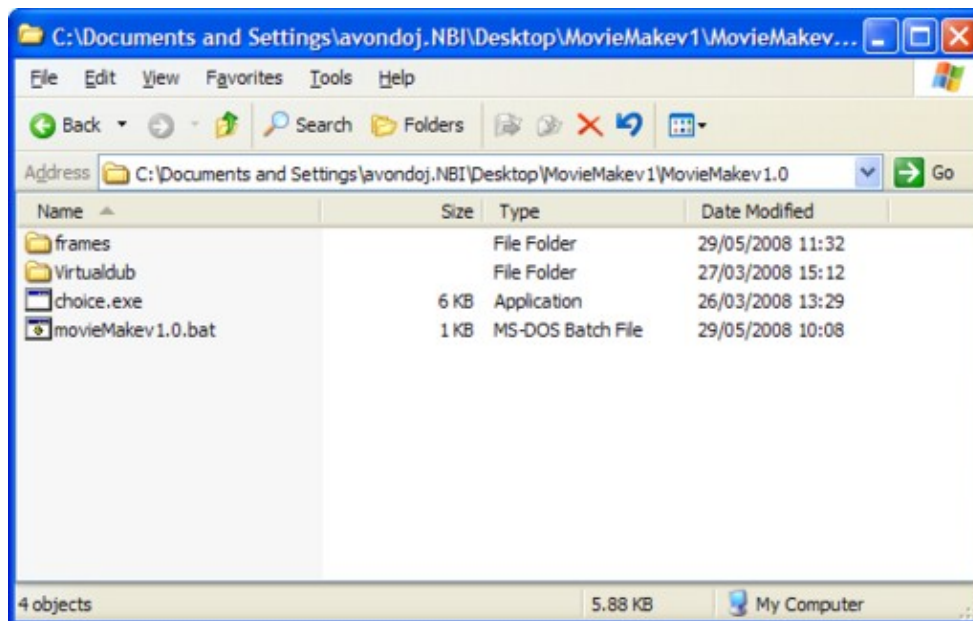
- .png
- .bmp
- .tga
- .jpg
- .jpeg
- .tiff

(NB) this .BAT and VirtualDub can only be used under Windows.

2 How to use it

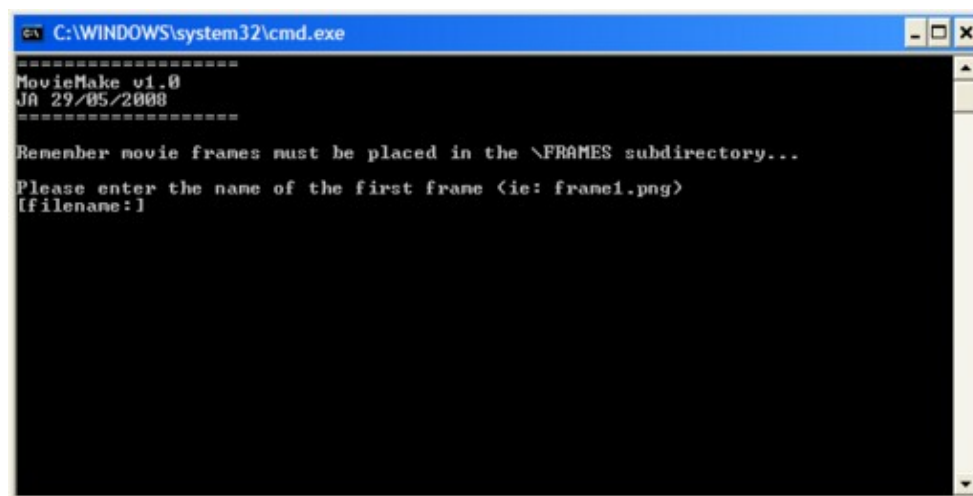
The first thing you need to do is to get the necessary files. These can be found here: [MovieMakev1.zip](#)

Save this file locally on your machine and extract the .ZIP file. What you should end up with is the following.



The MovieMake folder window.

The first step you need to do is put your image frames in the directory called **frames**. Once all the frames are in the folder, double click the **MovieMakev1.0.bat** file. This will launch the movie making.



MovieMake running.

The program will then ask you to enter the filename of the first file in

MakingMoviesFromFrames

your image frames, ie: something like **frame00001.png**. Note do not forget the file extension!

Once you have entered the filename, the movie creation will start. You will see Virtualdub start up and a progress bar will appear in your start bar.

Once the movie has been created, a file called **movie.avi** will be created in the root of the MovieMake folder.

The final step is that you will be asked if you wish to delete the original image frames that you put in the **frames** folder.

3 Changing the default movie settings (OPTIONAL)

The default movie making parameters that are used in VirtualDub are specified in a **.vcf** file. This file is created by running VirtualDub.

If you run VirtualDub, without any file loaded, you can specify all the settings you want, like frame rate, video codec, cropping etc etc. These settings can then be exported by choosing the **file->save processing settings**. This will produce a **.vcf** file.

Then you can edit the MovieMake **.bat** file to modify the following line:

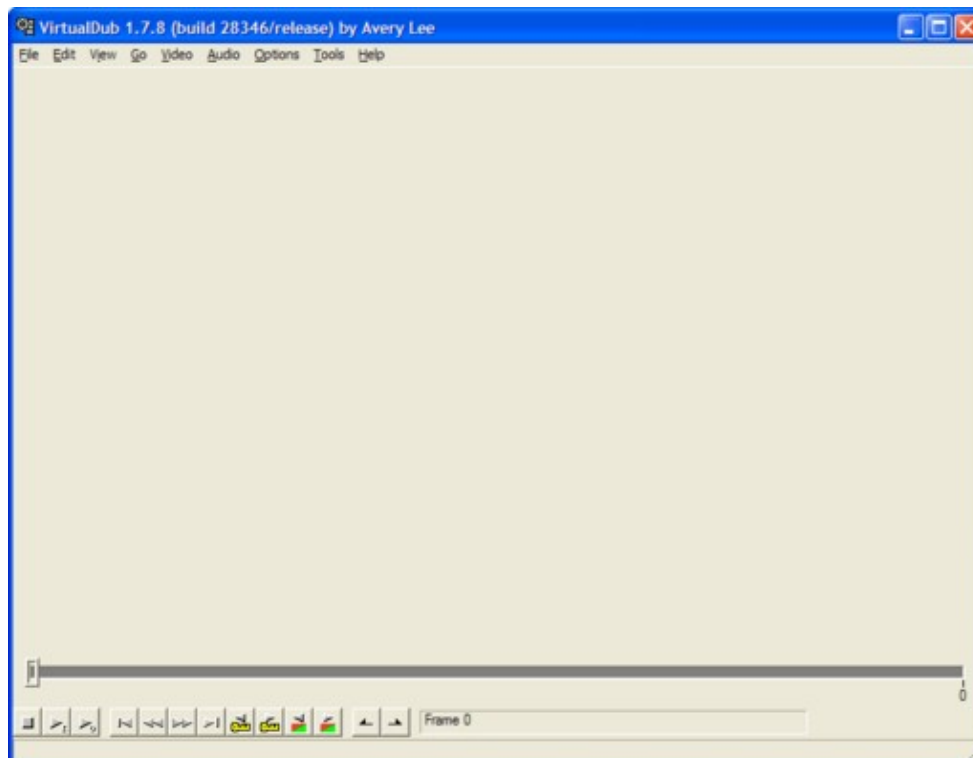
```
"%CD%\VirtualDub\virtualdub.exe" /s "%CD%\VirtualDub\moviesettingsCINEPACK.vcf" /c /p "%CD%\frame
```

You just change **moviesettingsCINEPACK.vcf** to the new **.vcf** file you want to use. Note in this example **.vcf** files are kept in the VirtualDub subdirectory.

3.1 Creating a .vcf file

This section is a step-by-step guide about creating a custom **.vcf** file.

The first thing you need to do is open VirtualDub. This is done by going to the **VirtualDub** directory and launching the **VirtualDub.exe** file. You should then be presented with the following screen:

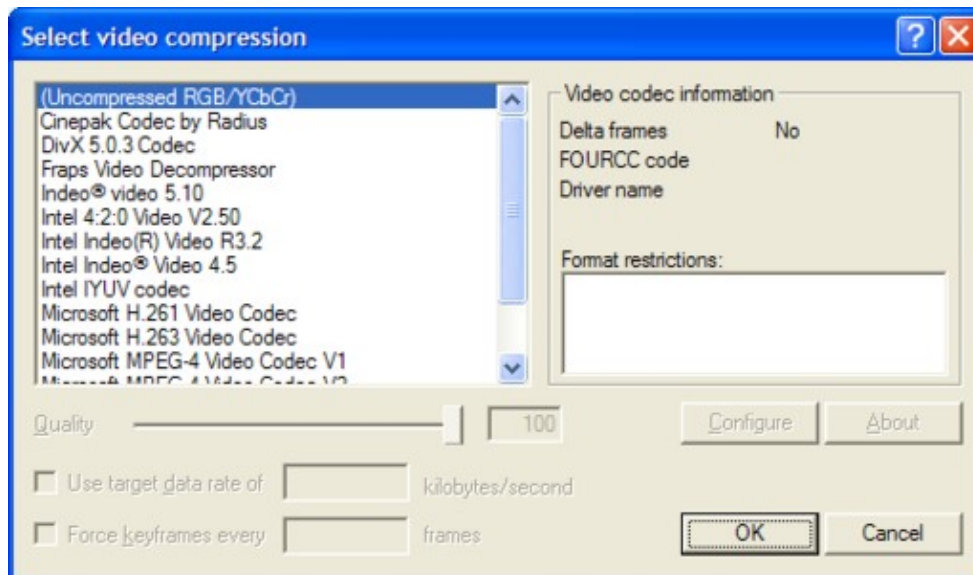


Launching VirtualDub.

3.1.1 Specifying the Codec

The first thing you will want to do is set what codec/compression the video will use. This is done by the menu **Video -> Compression**, or just press the keyboard shortcut **CTRL+P**.

This will then present you with the following screen:



Specifying video compression in VirtualDub.

The actual items in this list will vary from machine to machine, depending what video codecs you have installed on your machine. For this example we will keep things simple and use a codec known to be widely compatible on Windows machines.

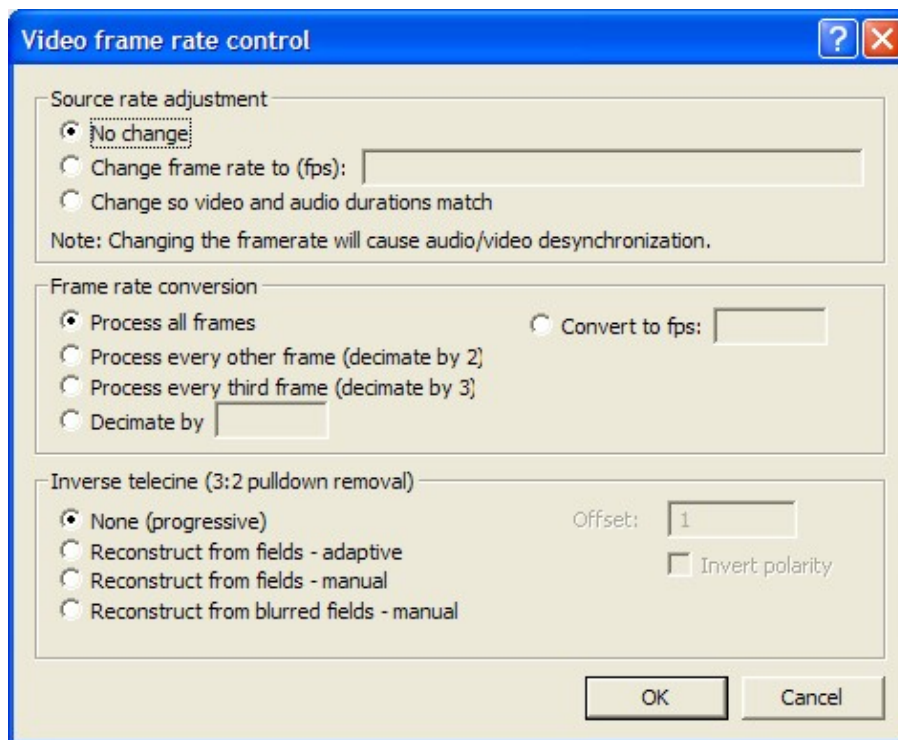
So choose the **Cinepak Codec by Radius**

Once you have selected this codec, you will see that the **Quality** slider becomes enabled. This quality slider controls the movie file size vs quality. So the higher the quality the larger the movie file will be. For this example lets keep this slider at the value **100**. Now we can apply these settings by clicking on the **OK** button.

3.1.2 Specifying the Frame Rate

The next step is to now specify the frame rate you want the movie to be produced at. To do so use the menu and go to **Video -> Frame Rate** or press the keyboard shortcut **CTRL+R**.

This will then present you with the folowing screen:



Specifying the frame rate in VirtualDub.

In the **Source rate adjustment** panel you want to choose the **Change frame rate to (fps)** option. This is where you specify the framerate of your movie. For example if you set this **fps** value to say **15** this means that the movie will display **15** of your movie frames in **1** second. The value you want to use here will depend very much on how you generated your movie frames. So be prepared to experiment with this value.

Once you have specified a framerate, remember to apply your setting by pressing the **OK** button.

3.1.3 Video filters

This step is optional. This step will introduce you to the video filters in order to have greater control over your movie. To open the video filters window go to **Video -> Filters** or press the keyboard shortcut **CTRL+F**. You will then be presented with the following screen.



Specifying the video filters in VirtualDub.

To add filters to your videos click on the **Add** button this will then present you with a list of filters to apply to your video. Some useful video filters are; resize, crop, brightness/contrast and invert just to name a few. Just experiment with a few if you wish to use these in your movie productions.

3.2 Exporting your .vcf file

Now that you have specified the minimum to produce a movie, ie: compression and frame rate, you can export these settings to use them with the MovieMake program.

To export your settings as a **.vcf** file go to the **File -> Save processing settings...** menu or just use the keyboard shortcut **CTRL+S**.

You will then be prompted for a filename to call your **.vcf** and where in the filesystem you want to save it to. The easiest option is to just save your custom **.vcf** files in the **Virtualdub** folder.

3.3 Using your .vcf file

Now the last step needed is to modify the **.bat** file to let it know about your newly created custom **.vcf** file. To do this select the **.bat** file and right click on it. A menu should appear and you should have an option called **EDIT**. Click on the **EDIT** option. This will open up the **.bat** file in notepad and allow you to modify it.

The line you want to change is:

```
"%CD%\VirtualDub\virtualdub.exe" /s "%CD%\VirtualDub\moviesettingsCINEPACK.vcf" /c /p "%CD%\frame"
```

MakingMoviesFromFrames

And here you just want to change the **moviesettingsCINEPACK.vcf** to the new **.vcf** file you want to use.

Remember to **save** your modified **.bat** file once you have edited it. Now the MovieMake will use your custom **.vcf** file, and you can produce movies in the same way you did before with the default settings.

4 External References

VirtualDub [2]

VirtualDub Documentation [3]